



HOWDENS



Your product care and
maintenance guide



Elmbridge Sage Green and Porcelain

Looking after your Kitchen



Greenwich Matt Slate Grey Handleless

Traditional values and trade quality are at the heart of everything we do.

That's why when it comes to manufacturing and testing our kitchen components, we go above and beyond industry standards.

This guide includes cleaning tips and useful information to ensure your new kitchen will function as designed for years to come.



Contents

Kitchen Doors and Decor Panels	4
Cabinets	8
Sinks	10
Taps	12
Worktops	13
Flooring	16
Doors	18
Hardware	19
Appliances	22

Looking after your Kitchen Doors and Decor Panels

To keep your kitchen in perfect condition, marks and stains should be removed as soon as possible.

Gloss, Matt and Timber Finishes

A popular choice for busy households, our Gloss, Matt, and Timber finishes remain looking fresh with the right maintenance. We recommend using non-abrasive cloths and cleaners to ensure the finish doesn't fade over time.



Recommendations

- Clean with a slightly damp, non-abrasive cloth
- For a Gloss finish, use Unika Gloss Surface Cleaner (GIR0981)
- For a Matt finish, use Unika Matt Surface Cleaner (GAR0366)
- Wipe dry with a soft, non-abrasive cloth
- For stubborn stains, use a solution of water and a mild household detergent



Avoid

- Wax furniture polish
- Abrasive cleaners
- Solvents



Clerkenwell Gloss Dove Grey



Hockley Super Matt Sandstone Handleless

Super Matt Specialist Cleaning Instructions

Our Super Matt finish should be cleaned using the guidance below as other processes and products may damage the finish.

Super Matt Cleaning - Soapy Water

Items required: warm soapy water, clean water, a clean non-abrasive cloth and paper towel or microfibre cloth for drying

Cleaning method:

1. Use warm, soapy water and a clean, non-abrasive cloth
2. Wet the cloth using the warm, soapy water and squeeze out excess water
3. Clean all areas required
4. Using clean water, wipe all cleaned areas to remove any soapy residue
5. It is important to dry immediately (using a soft paper towel or microfibre cloth) to provide a streak-free finish

Super Matt Cleaning - Super Matt Cleaner

Items required: Unika Super Matt Cleaner (GAR0366) and a clean cloth

Cleaning method:

1. Follow cleaning guidelines on the reverse of the product
2. Spray directly onto surface
3. Wipe over with a clean, damp cloth and allow to dry



Hockley Super Matt White



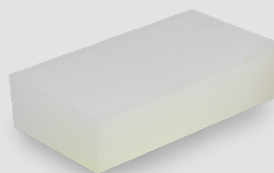
Hockley Super Matt Marine Blue Handleless

Super Matt Cleaning - Melamine Sponge

Items required: Unika Magic Eraser (CLN5036) and warm water

Cleaning method:

1. Ensure sponge is free from debris to prevent scratches
2. Wet sponge with warm water
3. Squeeze out excess water
4. Rub sponge gently on affected surface area until marks are removed
5. Start with a light pressure and increase as required in order to remove the mark
6. It is important to dry immediately (using a soft paper towel or microfibre cloth) to provide a streak-free finish
7. Sponge can be rinsed, cleaned and used again. Note: After several uses the sponge will become worn and should be replaced
8. Sponge can also be cut into smaller shapes for hard to reach areas





Slate Grey Handleless Cabinet with Hockley Super Matt Charcoal Handleless

Looking after your Cabinets

Our cabinets are manufactured to the highest quality. Regular cleaning of the edges and interior will ensure your cabinets keep their fresh appearance.



Recommendations

- Clean regularly with a solution of warm water and mild household detergent
- Wipe pre-fitted accessories down with a damp, non-abrasive cloth
- After cleaning, ensure the cabinet is fully dry



Avoid

- Wax furniture polish
- Abrasive cloths and cleaners
- Solvents

We pride ourselves on exceptional quality and standards

Strength and stability

Extensive testing means we can provide a 25 year guarantee for every kitchen cabinet. You can be confident that the quality of your Howdens kitchen will last and look great for years to come.

Manufactured by us in the UK



Our cabinets are manufactured in our UK factories.

25 year cabinet guarantee



All our rigid cabinets come with a 25 year guarantee.

We're working towards being the UK's leading responsible kitchen business.

Worthwhile

For more information visit



www.howdens.com/help-and-advice/about-us/sustainability
www.howdens.com/ie/help-and-advice/about-us/sustainability

Looking after your Sink

As one of the most used features in the kitchen, your sink will be vulnerable to daily wear-and-tear. Categorised by material, follow the information below to ensure your sink stays sparkling clean.

Stainless Steel

Stainless steel sinks are robust, however still need to be taken care of to ensure they stay looking their best.



Recommendations

- Use mild cleaning agents to remove rust marks if present
- Take care when using plastic washing up bowls as particles of grit or glass can become embedded in the base of the bowl and scratch the sink
- Always rinse your sink with water after cleaning or preparing food
- Dry your sink after use
- For tough stains, use a stain remover
- Clean along the grain to prevent marks



Avoid

- Leaving debris underneath the washing bowl as it can stain the sink over time
- Leaving wet cloths, pads, or containers on the sink
- Silver Dip cleaners
- Abrasive cloths and cleaning products
- Using bleach



Lamona Broadstone Open-Fronted Sink

Composite

Composite sinks are hard wearing with a scratch-resistant coating. With regular cleaning, they will continue to look their best for years to come.



Recommendations

- Clean regularly with hot, soapy water and a soft cloth
- To remove limescale deposits use a 50% mix of water and white wine vinegar, rinse thoroughly afterwards
- Use a nylon scratch pad or toothbrush on difficult areas
- Always rinse your sink with water after cleaning or preparing food
- Dry your sink after use
- For tough stains, use a stain remover



Avoid

- Leaving debris underneath the washing bowl as it can stain the sink over time
- Abrasive cloths and cleaning products

Ceramic

Ceramic sinks are crafted from premium fireclay and are durable with a non-porous smooth surface.



Recommendations

- Clean regularly with hot, soapy water and a soft or microfibre cloth
- To remove limescale deposits use a 50% mix of water and white wine vinegar and rinse thoroughly afterwards
- Use a nylon scratch pad or toothbrush on difficult areas
- When pouring boiling water into the sink turn on the cold tap first, so that the water in the bowl is a mixed temperature
- If metal marks occur, remove by using a ceramic rubber
- Always rinse your sink with water after cleaning or preparing food
- Dry your sink after use
- For tough stains, use a stain remover



Avoid

- Leaving debris underneath the washing bowl as it can stain the sink over time
- Highly concentrated drain cleaners containing hydrochloric or sulphuric acid
- Alternating between very hot and cold substances in the sink as the rapid expansion or contraction may cause cracking
- Abrasive cloths and cleaning products

Looking after your Tap

To keep your tap in perfect condition, we recommend marks and stains are removed as soon as possible.



Recommendations

- Clean regularly with hot, soapy water and a soft or microfibre cloth
- For brushed finish taps, always clean your tap along the grain of the scratch pattern
- Soaked cotton wool, a nylon scratch pad or toothbrush can be used on difficult areas
- Dry the tap after every use to prevent future build up of limescale
- To remove limescale deposits use a 50% mix of water and white wine vinegar and rinse thoroughly afterwards



Avoid

- Harsh household chemicals such as oven cleaners, drain cleaners, rust removers, paint strippers etc
- Abrasive cloths and cleaners
- Solvents, chlorinated solvents, ketones, acetones, scouring cleaners and acidic cleaners
- Leaving white vinegar in contact with the surface



Boiling and Hot Water Taps

Always follow the manufacturer's instructions for care and general maintenance.

For more information visit



www.howdens.com/kitchens/kitchen-sinks-and-taps/kitchen-taps



www.howdens.com/ie/kitchens/kitchen-sinks-and-taps/kitchen-taps

Looking after your Worktop

Your kitchen worktop will inevitably experience wear and tear of everyday use. To ensure it remains in optimum condition, regularly clean your worktop using the guide below.

Laminate Worktops



Recommendations

- Use a damp, non-abrasive cloth and a mild detergent or non-abrasive cleaner diluted in warm water
- Use heat resistant mats, trivets or hot rods on the surface of the worktop
- Use chopping boards for preparing food
- Immediately wipe spilt liquids away from joints, cut-outs and the front edge



Avoid

- Abrasive scouring powders, creams and polishes
- Placing objects taken directly from the oven or hob directly onto the laminate surface as this may lead to blistering
- Potentially persistent stains should be removed immediately



Calacatta Marble Laminated Worktop

Solid Wood Worktops

A durable and hardwearing worktop, solid wood is a natural material and therefore likely to vary in colour and grain.



Recommendations

- Always wipe spillages immediately
- Use oil treatments to restore the sheen of your worktop. This can be done when they start to look dull, or as a precaution every 3-6 months
- Use a soft cloth and warm water when cleaning
- Use heat resistant mats, trivets or hot rods on the surface of the worktop
- Use chopping boards for preparing food



Avoid

- In the first few days of use, care must be taken to prevent the worktop becoming stained. Water must not be allowed to lie on the surface and should be wiped off immediately with a cloth
- Concentrated detergents, especially those containing bleach



Ask your builder about Osmo Solid Wood Worktop Cleaner (GAR0548)

Quartz Worktops

Stain-resistant and hard-wearing, quartz worktops are easy to maintain. However, dark colours are more susceptible to showing scratches.



Recommendations

- Always wipe spillages immediately
- For stubborn marks use Unika Granite and Quartz Worktop Cleaner (TLS1016)
- Use a chopping board



Avoid

- Spilling strong chemical solvents on the worktop such as bleach, oven cleaner, paint remover, sink un-blocker or nail varnish
- Do not place excessive weight onto the worktop
- Wax, sprays and sealants
- Do not use abrasive cleaners
- Never place hot items directly on the worktop. We recommend the use of heat-resistant mats, trivets or hot rods

Compact Laminate Worktops

A durable man-made material, compact laminate worktops are waterproof and easy to wipe clean. However darker colours are more susceptible to marking and wear-and-tear than lighter colours.



Recommendations

- Always wipe spillages immediately using a damp cloth, especially liquids such as tea, coffee, blackcurrant and red wine. Should any staining occur, use a mild detergent and water to remove
- Remove stubborn stains using a mix of domestic bleach and warm water
- Unika Linseed Oil (GAR0127) is a great form of protection for the worktop edge and drainer grooves when applied during installation
- For more stubborn marks, a 400 Grit Scotch-Brite Hand Pad can be used. Standing water should be wiped off from drainer grooves within 6 hours to prevent water marks
- Use protective mats or trivets under hot pans and dishes



Avoid

- Acidic or abrasive cleaners
- Excess scrubbing
- Never cut directly onto the worktop, use a chopping board to protect the surface
- Plastic draining boards

Acrylic Worktops

Non-porous and long-lasting acrylic worktops are a low maintenance solution for busy households.



Recommendations

- Use a damp, non-abrasive cloth and Stone Guard cleaner for daily maintenance, buff dry with a soft cloth
- Use an abrasive pad to remove persistent stains
- To remove limescale deposits use a 50% mix of water and white wine vinegar. Leave in contact with the deposits for 30 minutes before rinsing off with clean water and buffing dry
- Use chopping boards for preparing food



Avoid

- Spilling strong chemical solvents on the worktop such as bleach, oven cleaner, paint remover, sink un-blocker or nail varnish
- Potentially persistent stains should be removed immediately
- Never place hot items directly on the worktop. We recommend the use of heat-resistant mats, trivets or hot rods
- Harsh chemical cleaners can damage the surface



Rustic Oak Rigid Luxury Vinyl Flooring

Looking after your Flooring

A vast range of materials can be used for flooring such as laminate, wood and vinyl. Categorized by material, follow our tips below to keep your flooring preserved and pristine.

Vinyl Flooring

Designed to replicate the look of natural materials, vinyl offers a durable and low-maintenance alternative.



Recommendations

- Use a vacuum cleaner or broom for daily cleaning
- Light stains can be removed with a dust-attracting mop and clean water
- On tough stains, use warm water and mild detergent
- Use felt pads on the feet of furniture to protect the floor from excessive scratching
- Use a dust-attracting mop to keep floors clean and dust-free



Avoid

- Standing water
- Abrasive cleaning products
- Using rubber-backed entrance door mats or rugs

Laminate

Laminate flooring is incredibly hard wearing and is suitable for almost every room in the home. Stain-resistant and anti-static surfaces make laminate a low maintenance floor covering.



Recommendations

- Use a vacuum cleaner or broom for daily cleaning
- Light stains can be removed with a wrung, damp flat mop and clean water
- Problem stains can be removed by using a mild detergent and warm water
- Use felt pads on the feet of furniture to protect the floor from excessive scratching
- Use a dust-attracting mop to keep floors clean and dust-free



Avoid

- Standing water
- Steam cleaning equipment
- Abrasive cleaning products

Timber & Engineered Wood

The construction of engineered wood offers a durable and long-lasting choice of flooring. The oak top layer can be sanded and re-finished to preserve or change the appearance over time.



Recommendations

- Problem stains can be removed by using a basic laminate cleaner
- A wrung mop can be used to remove stains, grease or footprints
- Use felt pads on the feet of furniture to protect the floor from excessive scratching
- Use a dust-attracting mop to keep floors clean and dust-free



Avoid

- Traditional wax
- Steel wool
- Room humidity rising above 65% or below 40%. An air humidifier may be necessary in air conditioned climates
- Contact with hard surfaces such as stones, furniture bases and heeled shoes
- Standing water

Your flooring will come with specific installation and care instructions.

For more information visit



www.howdens.com/joinery/floors/flooring
www.howdens.com/ie/joinery/floors/flooring



Primed Pattern 10 Glazed Roomflex Pro Room Divider

Looking after your Doors

The different materials and finishes of internal doors are highly resistant to the rigours of normal use and should only require regular, light dusting with a soft cloth.



Recommendations

- Remove sticky marks by using a dilute solution of warm, soapy water
- Rub area lightly, then dry thoroughly
- If scratches in the paint surface occur, use colour matched paint or our Door Repair Kits (GAR0540/GAR0547) as recommended in the instructions supplied with the door



Avoid

- Furniture polish containing silicone
- Abrasive cloths and cleaners
- Solvents
- Bleaches containing oxidising reagents

For information on the maintenance of our external doors, visit



www.howdens.com/joinery/doors?door_location=External

www.howdens.com/ie/joinery/doors?door_location=External

Looking after your Hardware

All hardware products are designed and manufactured to the highest levels, so ensuring they are properly cared for is important.

Satin Nickel, Satin Chrome and Brass

The coating on a lacquered product can degrade and is beyond the manufacturers control and cannot be guaranteed.



Recommendations

- Wipe with a soft cloth moistened with soapy water
- Use a soft cloth with beeswax
- Dry thoroughly



Avoid

- Damage to the surface from keys and rings
- Abrasive cleaning products



Cesano Polished Chrome Latch Door Handle

Nickel, Chrome and Pewter Effect

To maintain the bright, metallic finish of nickel, chrome and pewter effect hardware, following the guidance below.



Recommendations

- Wash periodically with a weak detergent solution
- Rub occasionally with paraffin or light oil on a dry cloth
- Dry thoroughly



Avoid

- Damage to the surface from keys and rings
- Solvent cleaners

Stainless Steel and Aluminium

Stainless steel and aluminium hardware typically requires little maintenance, but should still be carefully maintained.



Recommendations

- Remove smudges with a soft, damp cloth
- Dry thoroughly
- Dust regularly



Avoid

- Acid based cleaners
- Chlorine based cleaners
- Abrasive cloths and cleaners

Solid Pewter

Many solid pewter fixtures feature an antique-effect patina, which mirrors the appearance of vintage ironmongery for a look that is full of classic character. To maintain the factory finish, follow the guidance below.



Recommendations

- Clean every 3-6 months with warm, soapy water
- Dry thoroughly
- For darkened pewter, apply a coat of metal polish and buff vigorously when dry to a shine



Avoid

- Solvent cleaners
- Household polish or aerosols



Lecco Satin Stainless Steel Door Handle

Guarantees and aftersales



Register my appliance



For more information about our standards and accreditations visit:



www.howdens.com/help-and-advice/aftersales/guarantees-and-accreditations

www.howdens.com/ie/help-and-advice/aftersales/guarantees-and-accreditations



Tell us what you think about your Howdens products



Rated Excellent*
Over 25,000 Reviews

Trustpilot is an independent review website open to everyone. Search online for **Howdens Trustpilot**

*Rating and number of reviews correct as of February 2022



Lamona 4 Burner Professional Gas Hob

Looking after your Appliances

Appliances can make all the difference when it comes to the smooth running of a household, so ensuring they're properly maintained is essential.

The care and maintenance of your appliances are all unique. Refer to the operating manual for your appliance for further information on how to care for your product.

For more information visit



www.howdens.com/kitchens/appliances

www.howdens.com/ie/kitchens/appliances

LAMONA

at the heart of the kitchen

Cooking, cooling, washing and drying



Your Lamona appliances have been expertly designed and manufactured to fit seamlessly into every Howdens kitchen.

Register your Lamona appliance today to make the most of our extended 5 year warranty.

(not available in the Republic of Ireland)



Call



0333 010 0009



01525 5752

or visit



www.howdens.com/appliance-registration



www.howdens.com/ie/appliance-registration



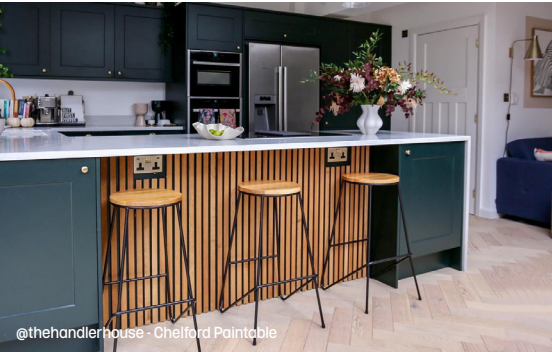
Our Kitchens in Real Homes



@country_home_project - Elmbridge Dove Grey



@housenumberthree - Allendale Dove Grey



@thehandlerhouse - Chelford Paintable

For a chance to be featured, share your Howdens kitchen by tagging us and using #HowdensHome

Find us at...



@howdensjoinery



@howdenskitchensandjoinery



@howdensofficial



@howdensjoinery